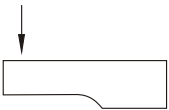
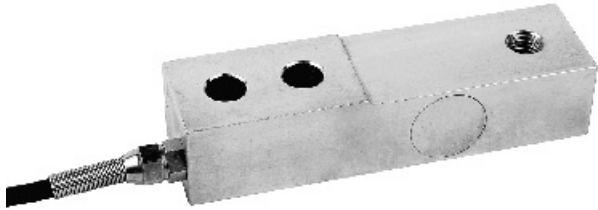
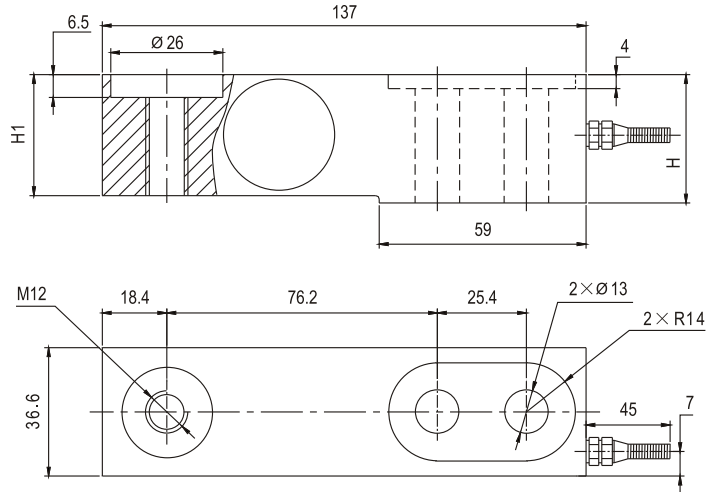


SSB06

Load cell 称重传感器



叉车秤、低平台秤、平台秤
Forklift scale, low platform scale, platform scale



Type 型号	SSB06/A	SSB06/B
H	36.6	31
H1	34.5	29

Specifications 技术说明 Exc+激励正 (Red,红);Exc-激励负(Black,黑);Sig+信号正(Green,绿);Sig-信号负(White,白)

Item 项目	Unit 单位	Parameter 参数
Accuracy class to OIML R 60 精度等级		C2
Maximum capacity (Emax) 额定载荷	t	1
Minimum LC verification interval (Vmin) 最小检定分度值	% of Emax	0.0200
Sensitivity (Cn) / Zero balance 灵敏度/零点平衡	mV/V	2.0 ± 0.002 / 0 ± 0.02
Temperature effect on zero balance (TK0) 温度对零点影响	% of Cn/10K	±0.02
Temperature effect on sensitivity (TKc) 温度对灵敏度影响	% of Cn/10K	±0.02
Hysteresis error (dhy) 滞后误差	% of Cn	±0.0270
Non-linearity(dlin) 非线性误差	% of Cn	±0.0250
Creep(dcr) over 30 min. 蠕变及蠕变恢复	% of Cn	±0.030
Input (RLc) & Output resistance (Ro) 输入&输出电阻	Ω	400 ± 10 & 352 ± 3
Nominal range of excitation voltage (Bu) 额定电压	V	5~12
Insulation resistance (Ris) at 50Vdc 绝缘电阻	MΩ	≥5000
Service temperature range (Btu) 工作温度	℃	-30...+70
Safe load limit (EL) & Breaking load (Ed) 安全承载&破坏载荷	% of Emax	150 & 300
Protection class according to EN 60 529 (IEC 529) 保护等级		IP67
Material :Measuring element 材料: 弹性体 Cable fitting 电缆配件 Cable-sheath 电缆护套		Stainless or alloy steel Stainless steel or nickel-plated brass PVC

Type 型号		SSB06/A	SSB06/B
Weight(G),approx 重量	kg	1.2	1.1
Deflection at Emax (snom) ,approx 最大载荷下的变形量	mm	<0.6	
Cable 电缆: Diameter 直径: Ø6mm Length 长度	m	1.9	