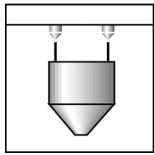
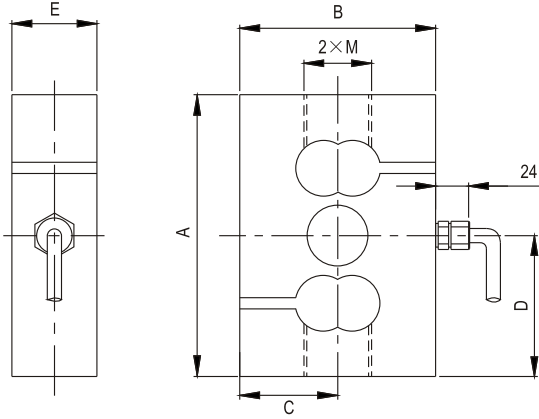
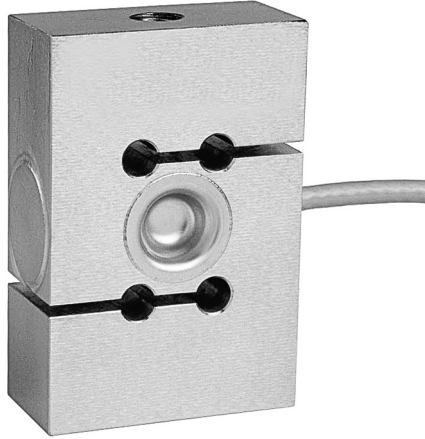


TS06

Load cells 称重传感器



Emax[t]	A	B	C	D	E	M
0.2,0.5,1	87.3	57.2	28.6	43.7	24	M12×1.75
2	100	69.8	34.9	50	31	M24×2
5	100	76.2	38.1	50	36.6	M24×2

Specifications 技术说明 Exc+激励正 (Red,红);Exc-激励负(Black,黑);Sig+信号正(Green,绿);Sig-信号负(White,白)

Item 项目	Unit 单位	Parameter 参数	
Accuracy class to OIML R 60 精度等级		C2	C3
Maximum capacity (Emax) 额定载荷	t	0.2,0.5,1,2,5	
Minimum LC verification interval (Vmin) 最小检定分度值	% of Emax	0.0200	
Sensitivity (Cn) / Zero balance 灵敏度/零点平衡	mV/V	2.0 ± 0.005 / 0 ± 0.02	
Temperature effect on zero balance (TK0) 温度对零点影响	% of Cn/10K	±0.02	±0.0167
Temperature effect on sensitivity (TKc) 温度对灵敏度影响	% of Cn/10K	±0.02	±0.0167
Hysteresis error (dhy) 滞后误差	% of Cn	±0.0350	±0.0200
Non-linearity(dlin) 非线性误差	% of Cn	±0.0330	±0.0200
Creep(dcr) over 30 min. 蠕变及蠕变恢复	% of Cn	±0.030	±0.0167
Input (RLc)&Output resistance (Ro) 输入&输出电阻	Ω	400 ± 10 & 352 ± 3	
Nominal range of excitation voltage (Bu) 额定电压	V	5~12	
Insulation resistance (Ris) at 50Vdc 绝缘电阻	MΩ	≥5000	
Service temperature range (Btu) 工作温度	°C	-30...+70	
Safe load limit (EL) & Breaking load(Ed) 安全承载&破坏载荷	% of Emax	120 & 200	
Protection class according to EN 60 529 (IEC 529) 保护等级		0.2t~0.5t:IP67;1t~5t:IP68	
Material :Measuring element 材料: 弹性体 Cable fitting 电缆配件/Cable-sheath 电缆护套		Stainless or alloy steel Stainless steel / PVC	

Maximum capacity (Emax) 额定载荷	t	0.2	0.5	1	2	5
Deflection at Emax (snom) ,approx 最大载荷下的变形量	mm	0.15	0.25	0.38	0.46	
Weight(G),approx 重量	kg	1.2	1.2	1.8	2.1	
Cable 电缆: Diameter 直径: ∅6mm Length 长度	m	3			5	