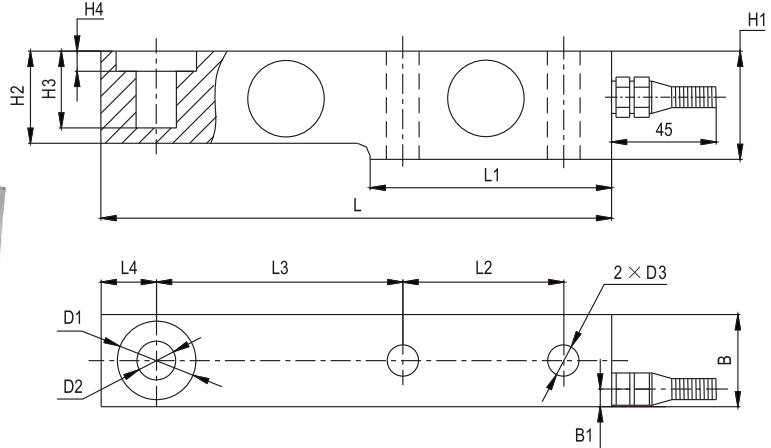


SSB01

Load cells 称重传感器



地上衡、配料秤、料斗秤、
平面台秤
Floor scale, blending scale,
bailer scale, platform scale

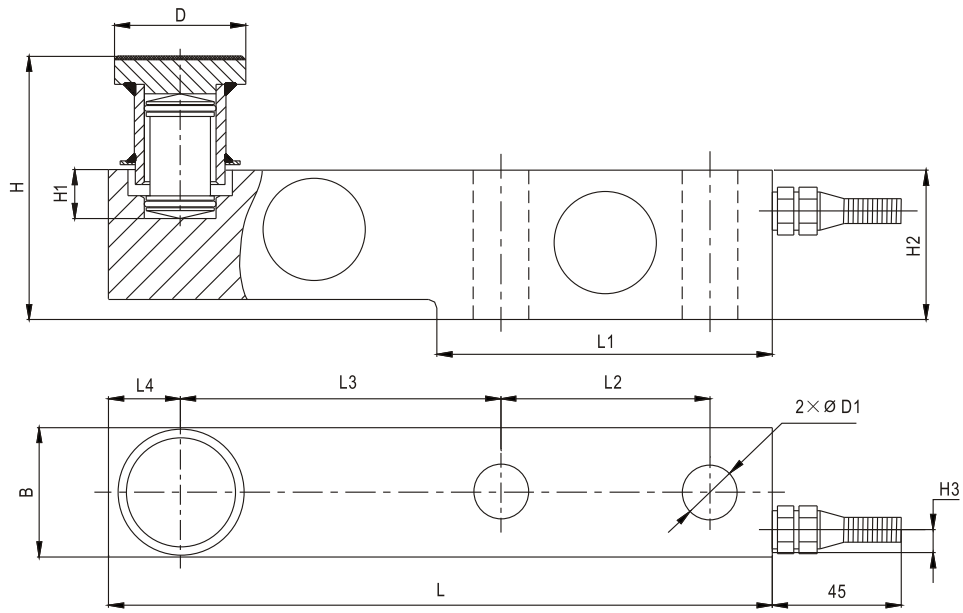
E _{max} [t]	L	L1	L2	L3	L4	H1	H2/B	B1	H3	H4	D1	D2	D3
0.5,1,2,3	203	95	64	98	22	43	36.6	7	30.5	8	∅32	∅16	∅13
5,7,5,8	235	110	66	124	22	52	48	7	30	12	∅38	∅22	∅21
10,15	279	133	82	140	32	67	60	8.5	20	8.5	∅48	∅32	∅28
20,25	318	153	89	159	38	82.5	70	9.5	24	9.5	∅54	∅38	∅34

Specifications 技术说明 Exc+激励正 (Red,红);Exc-激励负(Black,黑);Sig+信号正(Green,绿);Sig-信号负(White,白)

Item 项目	Unit 单位	Parameter 参数	
Accuracy class to OIML R 60 精度等级		C2	C3
Maximum capacity (E_{max}) 额定载荷	t	0.5,1,2,3,5,7,5,8,10,15,20,25	
Minimum LC verification interval (V _{min}) 最小检定分度值	% of E _{max}	0.0200	0.0100
Sensitivity (C_n) / Zero balance 灵敏度/零点平衡	mV/V	2.0 ± 0.002 / 0 ± 0.02	
Temperature effect on zero balance (TK ₀) 温度对零点影响	% of C _n /10K	±0.02	±0.0170
Temperature effect on sensitivity (TK _c) 温度对灵敏度影响	% of C _n /10K	±0.02	±0.0170
Hysteresis error (d _{hy}) 滞后误差	% of C _n	±0.0270	±0.0180
Non-linearity(d _{lin}) 非线性误差	% of C _n	±0.0250	±0.0167
Creep(d _{cr}) over 30 min. 蠕变及蠕变恢复	% of C _n	±0.0233	±0.0167
Input (R_{ic}) & Output resistance (R_o) 输入&输出电阻	Ω	400 ± 10 & 352 ± 3	
Nominal range of excitation voltage (B_u) 额定电压	V	5~12	
Insulation resistance (R _{is}) at 50Vdc 绝缘电阻	MΩ	>5000	
Service temperature range (B _{tu}) 工作温度	°C	-30...+70	
Safe load limit (E _L) & Breaking load(E _d) 安全承载&破坏载荷	% of E _{max}	150 & 300(0.5t~5t);120&200(8t~25t)	
Protection class according to EN 60 529 (IEC 529) 保护等级		500kg:IP67;1t~25t:IP68	
Material :Measuring element 材料: 弹性体 Cable fitting 电缆配件 Cable-sheath 电缆护套		0.5t...5t:Stainless or alloy steel 10t...25t: alloy steel Stainless steel or nickel-plated brass PVC	

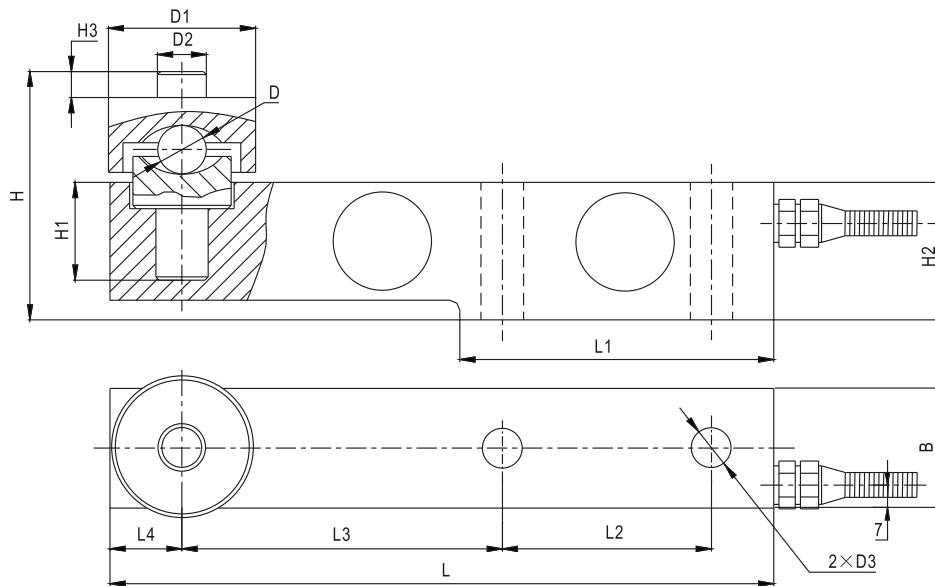
Maximum capacity (E _{max}) 额定载荷	t	0.5,1,2	3	5	7.5/8	10	15	20	25
Deflection at E _{max} (s _{nom}) ,approx最大载荷下的变形量	mm	<1	<1.2	<1.5	<1.2	<1.2	<1.5	<1.5	<1.5
Weight(G),approx 重量	kg	2.2	4.2	8.0	11.5				
Cable 电缆: Diameter 直径: ∅6mm Length长度	m	2.6	3.5	5.2	7	12	12		

SSB01 总装图 A



Emax[t]	L	L1	L2	L3	L4	B	H	H1	H2	H3	D	D1
0.5, 1, 2, 3	203	95	64	98	22	36.6	58	30.5	43	7	∅35	∅13
5, 7.5, 8	235	110	66	124	22	48	81	30	52	7	∅42	∅21
10, 15	279	133	82	140	32	60	128	20	67	8.5	∅57	∅28
20, 25	318	153	89	159	38	70	144	24	82.5	9.5	∅70	∅34

SSB01 总装图 B



Emax[t]	L	L1	L2	L3	L4	B	H	H1	H2	H3	D	D1	D2	D3
0.5, 1, 2, 3	203	95	64	98	22	36.6	79	30.5	43	9	∅16	∅45	∅15	∅13
5, 7.5, 8	235	110	66	124	22	48	104	30	52	10	∅25	∅52	∅21	∅21