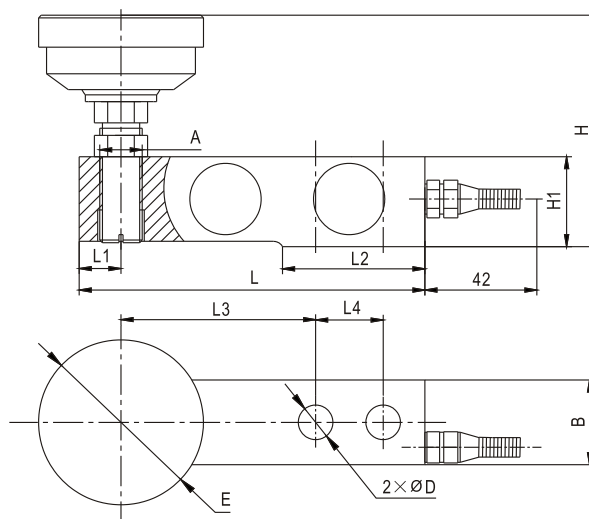


SSB03

Load cells 称重传感器



$E_{max}[t]$	A	B	D	E	H	H1	L	L1	L2	L3	L4
0.5,1,2,2.5,3	M16×1.5	31.8	∅13	∅62	87~92	33.8	130	12.7	53.5	76.2	25.4
5	M18×1.5	38.1	∅19	∅62	106~116	41	171.5	19	72.5	95.3	38.1
7.5	M20×2	43	∅21	∅78	124~136	44	188	21.5	90	97	50.8
10	M24×2	50.8	∅26	∅78	135~147	53.8	225.5	25.3	102	124	50.8

Specifications 技术说明 Exc+激励正 (Red,红);Exc-激励负(Black,黑);Sig+信号正(Green,绿);Sig-信号负(White,白)

Item 项目	Unit 单位	Parameter 参数
Accuracy class to OIML R 60 精度等级		C2
Maximum capacity (Emax) 额定载荷	t	0.5,1,2,2.5,3,5,7.5,10
Minimum LC verification interval (Vmin) 最小检定分度值	% of Emax	0.0200
Sensitivity (Cn) / Zero balance 灵敏度/零点平衡	mV/V	2.0 ± 0.002 / 0 ± 0.02
Temperature effect on zero balance (TK0) 温度对零点影响	% of Cn/10K	±0.02
Temperature effect on sensitivity (TKc) 温度对灵敏度影响	% of Cn/10K	±0.02
Hysteresis error (dhy) 滞后误差	% of Cn	±0.0350
Non-linearity(dlin) 非线性误差	% of Cn	±0.0250
Creep(dcr) over 30 min. 蠕变及蠕变恢复	% of Cn	±0.0233
Input (RLc) & Output resistance (Ro) 输入&输出电阻	Ω	400 ± 10 & 352 ± 3
Nominal range of excitation voltage (Bu) 额定电压	V	5~12
Insulation resistance (Ris) at 50Vdc 绝缘电阻	MΩ	>5000
Service temperature range (Btu) 工作温度	°C	-30...+70
Safe load limit (EL) & Breaking load(Ed) 安全承载&破坏载荷	% of Emax	150 & 200
Protection class according to EN 60 529 (IEC 529) 保护等级		500kg:IP67;1t~10t:IP68
Material :Measuring element 材料: 弹性体 Cable fitting 电缆配件 Cable-sheath 电缆护套		0.5t...5t:Stainless or volly steel 7.5t,10t.: Volly steel Stainless steel or nickel-plated brass PVC

Maximum capacity (Emax) 额定载荷	t	0.5	1	2	2.5	3	5	7.5	10
Deflection at Emax (snom) ,approx 最大载荷下的变形量	mm	<0.5			<0.6			<0.7	
Weight(G),approx 重量	kg	1			1.6			3.3	3.6
Cable 电缆: Diameter 直径: ∅6mm Length 长度	m	3			4.2			5	