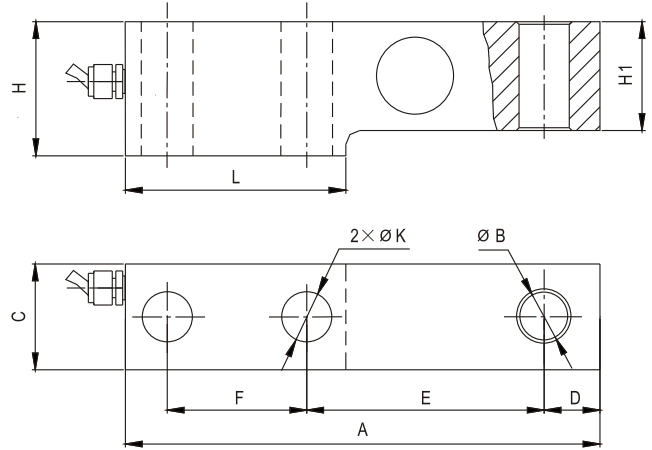
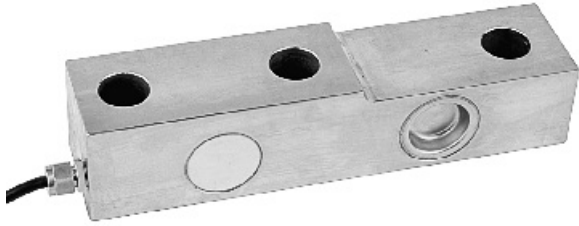


# SSB05

## Load cells 称重传感器



地上衡、配料秤、料斗秤、平台秤  
Floor scale, blending scale, bailer scale, platform scale

Emax[t]	A	C	D	E	F	H	H1	L	B	K
0.3,0.5	135	26	18	75	25	36	32	58	11.5	11.5
1,2	135	30	18	75	25	38	34	58	13.5	13.5
3,5	170	38	20	85	50	48	39	79	18	18.5
10	263	60	30	118	90	60	52	143	26	26

### Specifications 技术说明 Exc+激励正 (Red,红);Exc-激励负(Black,黑);Sig+信号正(Green,绿);Sig-信号负(White,白)

Item 项目	Unit 单位	Parameter 参数	
Accuracy class to OIML R 60 精度等级		D1	C 1
<b>Maximum capacity (Emax) 额定载荷</b>	<b>t</b>	<b>0.3,0.5,1,2,3,5,10</b>	
Minimum LC verification interval (Vmin) 最小检定分度值	% of Emax	0.0200	
<b>Sensitivity (Cn) / Zero balance 灵敏度/零点平衡</b>	<b>mV/V</b>	<b>2.0 ± 0.002 / 0 ± 0.02</b>	
Temperature effect on zero balance (TKo) 温度对零点影响	% of Cn/10K	±0.025	±0.02
Temperature effect on sensitivity (TKc) 温度对灵敏度影响	% of Cn/10K	±0.0285	±0.02
Hysteresis error (dhy) 滞后误差	% of Cn	±0.1000	±0.0330
Non-linearity(dlin) 非线性误差	% of Cn	±0.0500	±0.0250
Creep(dcr) over 30 min. 蠕变及蠕变恢复	% of Cn	±0.0490	±0.020
<b>Input (RLc) &amp; Output resistance (Ro) 输入&amp;输出电阻</b>	<b>Ω</b>	<b>400 ± 10 &amp; 352 ± 3</b>	
<b>Nominal range of excitation voltage (Bu) 额定电压</b>	<b>V</b>	<b>5~12</b>	
Insulation resistance (Ris) at 50Vdc 绝缘电阻	MΩ	≥5000	
Service temperature range (Btu) 工作温度	°C	-30...+70	
Safe load limit (El) & Breaking load(Ed) 安全承载&破坏载荷	% of Emax	150 & 300	
<b>Protection class according to EN 60 529 (IEC 529) 保护等级</b>		<b>0.3t,0.5t:IP67;1t~10t:IP68</b>	
Material :Measuring element 材料: 弹性体		Stainless or alloy steel	

Maximum capacity (Emax) 额定载荷	t	0.3	0.5	1	2	3	5	10
Deflection at Emax (snom) ,approx 最大载荷下的变形量	mm	0.55			0.65		0.75	
Weight(G),approx 重量	kg	0.8		1		2.3		5.6
Cable 电缆: Diameter 直径: Ø5mm Length 长度	m	3			5		7	