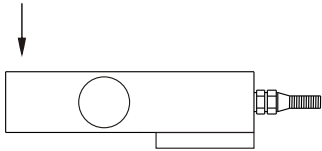
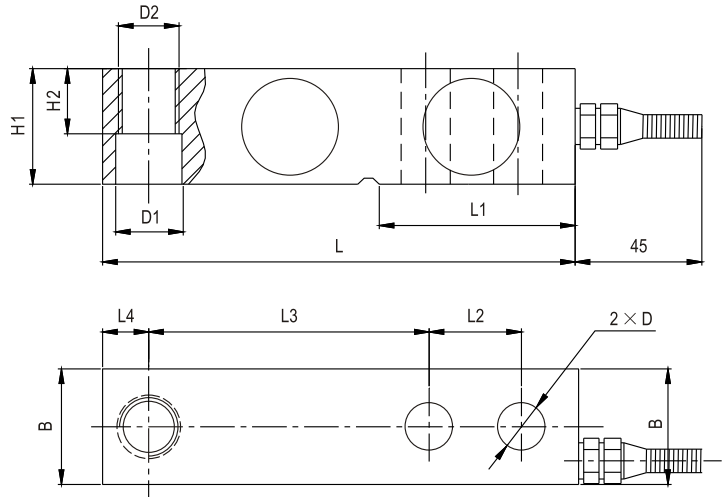


SSB60

Load cells 称重传感器



地上衡、配料控制系统、平面台秤
Floor scale, blending control system, low platform scale



Emax[t]	L	L1	L2	L3	L4	B	H1	H2	D	D1	D2
0.5~2.5	130	53.5	25.4	76.2	12.7	31.8	31.8	20	∅13	∅17.5	M16×1.5
3~5	171.5	72.5	38.1	95.3	19	38.1	38.1	26	∅20	∅20	M18×1.5
10	225.5	102	50.8	124	25.3	50.8	50.8	25.4	∅27	∅27	M24×2

Specifications 技术说明 Exc+激励正 (Red,红);Exc-激励负(Black,黑);Sig+信号正(Green,绿);Sig-信号负(White,白)

Item 项目	Unit 单位	Parameter 参数	
Accuracy class to OIML R 60 精度等级		C1	C3
Maximum capacity (Emax) 额定载荷	t	0.5,1,2,2.5,3,5,7.5,10	
Minimum LC verification interval (Vmin) 最小检定分度值	% of Emax	0.0200	0.0100
Sensitivity (Cn) / Zero balance 灵敏度/零点平衡	mV/V	3.0 ± 0.003 / 0 ± 0.03	
Temperature effect on zero balance (TK0) 温度对零点影响	% of Cn/10K	±0.02	±0.0170
Temperature effect on sensitivity (TKc) 温度对灵敏度影响	% of Cn/10K	±0.02	±0.0170
Hysteresis error (dny) 滞后误差	% of Cn	±0.0270	±0.0180
Non-linearity(dlin) 非线性误差	% of Cn	±0.0250	±0.0167
Creep(dcr) over 30 min. 蠕变及蠕变恢复	% of Cn	±0.030	±0.0167
Input (RLc)&Output resistance (Ro) 输入&输出电阻	Ω	400 ± 10 & 352 ± 3	
Nominal range of excitation voltage (Bu) 额定电压	V	5~12	
Insulation resistance(Ris)at 50Vdc 绝缘电阻	MΩ	≥5000	
Service temperature range (Btu) 工作温度	℃	-30...+70	
Safe load limit (EL)&Breaking load(Ed) 安全承载&破坏载荷	% of Emax	120 & 200	
Protection class according to EN 60 529 (IEC 529) 保护等级		0.5t:IP67;1t~10t:IP68	
Material :Measuring element 材料: 弹性体		Stainless or alloy steel	
Cable fitting 电缆配件		Stainless steel or nickel-plated brass	
Cable-sheath 电缆护套		PVC	

Maximum capacity (Emax) 额定载荷	t	0.5	1	2	2.5	3	5	7.5	10
Deflection at Emax (snom) ,approx 最大载荷下的变形量	mm	<0.65			<0.75		<0.85		
Weight(G),approx 重量	kg	1.0			2.1		4.2		
Cable 电缆: Diameter 直径: ∅6mm Length长度	m	3			4.2		5		