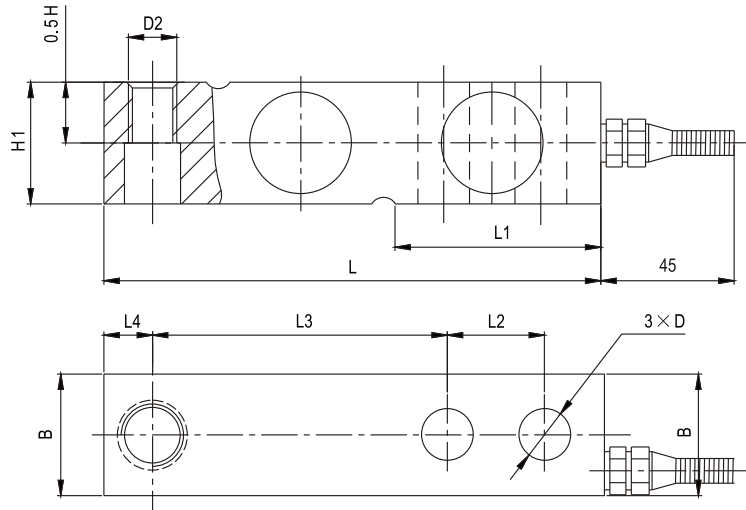


SSB63

Load cells 称重传感器



Emax[klb]	L	L1	L2	L3	L4	B	H1	H2	D	D2
2.5,4	130	53.5	25.4	76.2	12.7	31.8	31.8	20	∅13	M12
6	171.5	72.5	38.1	95.3	19	38.1	38.1	25.4	∅20	M20×1.5

Specifications 技术说明 Exc+激励正 (Red,红);Exc-激励负(Black,黑);Sig+信号正(Green,绿);Sig-信号负(White,白)

Item 项目	Unit 单位	Parameter 参数
Accuracy class to OIML R 60 精度等级		C2
Maximum capacity (Emax) 额定载荷	klb	2.5,4,6
Minimum LC verification interval (Vmin) 最小检定分度值	% of Emax	0.0200
Sensitivity (Cn) / Zero balance 灵敏度/零点平衡	mV/V	3.0 ± 0.003 / 0 ± 0.03
Temperature effect on zero balance (TK0) 温度对零点影响	% of Cn/10K	±0.02
Temperature effect on sensitivity (TKc) 温度对灵敏度影响	% of Cn/10K	±0.02
Hysteresis error (dhy) 滞后误差	% of Cn	±0.0270
Non-linearity(dlin) 非线性误差	% of Cn	±0.0250
Creep(dcr) over 30 min. 蠕变及蠕变恢复	% of Cn	±0.030
Input (RLc)&Output resistance (Ro) 输入&输出电阻	Ω	400 ± 10 & 352 ± 3
Nominal range of excitation voltage (Bu) 额定电压	V	5~12
Insulation resistance (Ris) at 50Vdc 绝缘电阻	MΩ	≥5000
Service temperature range (Btu) 工作温度	°C	-30...+70
Safe load limit (EL) & Breaking load (Ed) 安全承载&破坏载荷	% of Emax	120 & 200
Protection class according to EN 60 529 (IEC 529) 保护等级		IP68
Material :Measuring element 材料: 弹性体 Cable fitting 电缆配件 Cable-sheath 电缆护套		Stainless or alloy steel Stainless steel or nickel-plated brass PVC

Maximum capacity (Emax) 额定载荷	klb	2.5	4	6
Deflection at Emax (snom) ,approx 最大载荷下的变形量	mm	<0.55		<0.65
Weight(G),approx 重量	kg	1.0		2.1
Cable 电缆: Diameter 直径: ∅6mm Length 长度	m	3		5