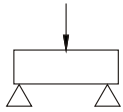
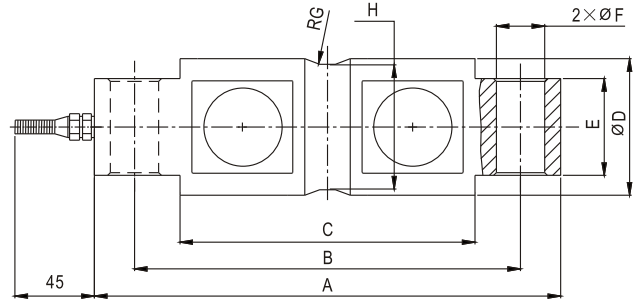


DSB09

Load cells 称重传感器



汽车衡、轴量秤、仓储秤等
Truck scale, axle wheel scale, warehouse scale

Emax[klb]	A	B	C	D	E	F	G	H
5,10	206.3	174.8	133.1	43.2	28.5	16.8	12.7	37.6
20,25	206.3	174.8	133.1	49.5	28.5	16.8	12.7	37.6
30,50,60	260.4	215.9	164.6	76.2	60.2	26.9	25.4	69.3
100	285.8	241.3	190.2	88.9	63.5	26.9	25.4	82.3

Specifications 技术说明 Exc+激励正 (Red,红);Exc-激励负(Black,黑);Sig+信号正(Green,绿);Sig-信号负(White,白)

Item 项目	Unit 单位	Parameter 参数
Accuracy class to OIML R 60 精度等级		C1
Maximum capacity (Emax) 额定载荷	klb	5,10,20,25,30,50,60,100
Minimum LC verification interval (Vmin) 最小检定分度值	% of Emax	0.0200
Sensitivity (Cn) / Zero balance 灵敏度/零点平衡	mV/V	3.0 ± 0.003 / 0 ± 0.03
Temperature effect on zero balance (TK0) 温度对零点影响	% of Cn/10K	±0.02
Temperature effect on sensitivity (TKc) 温度对灵敏度影响	% of Cn/10K	±0.02
Hysteresis error (d _{hy}) 滞后误差	% of Cn	±0.0500
Non-linearity(d _{lin}) 非线性误差	% of Cn	±0.0300
Creep(d _{cr}) over 30 min. 蠕变及蠕变恢复	% of Cn	±0.030
Input (R_{ic}) & Output resistance (R_o) 输入&输出电阻	Ω	750 ± 10 & 703 ± 2
Nominal range of excitation voltage (B_u) 额定电压	V	5~12
Insulation resistance (R _{is}) at 50Vdc 绝缘电阻	MΩ	≥5000
Service temperature range (B _{tu}) 工作温度	°C	-30...+70
Safe load limit (E _L) & Breaking load (E _d) 安全承载&破坏载荷	% of Emax	150 & 250
Protection class according to EN 60 529 (IEC 529) 保护等级		IP68
Material :Measuring element 材料: 弹性体 Cable fitting 电缆配件 Cable-sheath 电缆护套		Stainless or volly steel Stainless steel or nickel-plated brass PVC

Maximum capacity (Emax) 额定载荷	klb	5	10	20	25	30	50	60	100
Deflection at Emax (s _{nom}), approx 最大载荷下的变形量	mm	0.65	0.65	0.65	0.75	0.75	0.85	0.85	0.85
Weight(G), approx 重量	kg	2.1	2.6	2.6	7.9	7.9	13.5	13.5	13.5
Cable 电缆: Diameter 直径: Ø6mm Length 长度	m	8	12	12	12	12	16	16	16