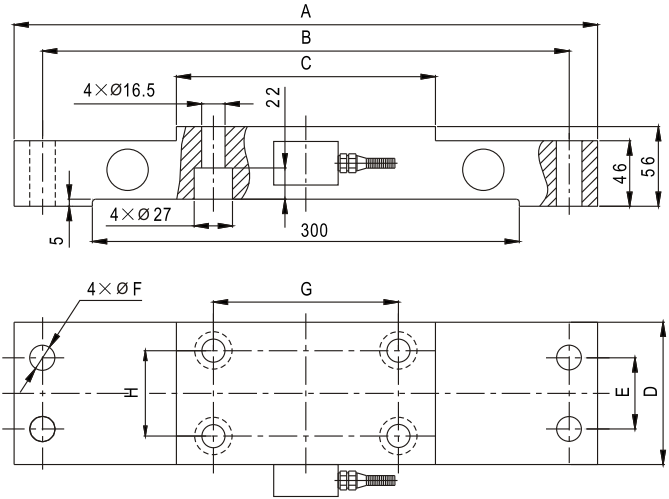
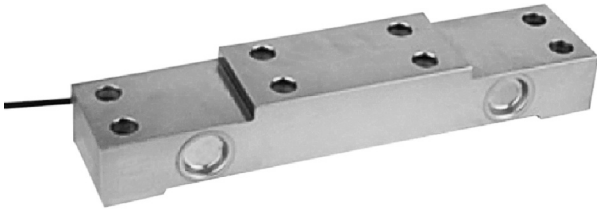
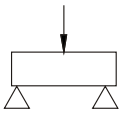


DSB10

Load cells 称重传感器



Emax[t]	A	B	C	D	E	F	G	H
1.5	350	310	152	75	38	17	100	40
2.5	410	355	182	100	50	21	130	60
4~10	410	355	212	100	50	21	160	60



起重量限制器 Lifting Weight Limiter

Specifications 技术说明

Exc+激励正 (Red,红);Exc-激励负(Black,黑);Sig+信号正(Green,绿);Sig-信号负(White,白)

Item 项目	Unit 单位	Parameter 参数
Accuracy class to OIML R 60 精度等级		D1
Maximum capacity (Emax) 额定载荷	t	1.5,2.5,4,5,7.5,10
Minimum LC verification interval (Vmin)最小检定分度值	% of Emax	0.0500
Sensitivity (Cn) / Zero balance 灵敏度/零点平衡	mV/V	1.2 ± 0.002 / 0 ± 0.02
Temperature effect on zero balance (Tko) 温度对零点影响	% of Cn/10K	±0.0300
Temperature effect on sensitivity (TKc) 温度对灵敏度影响	% of Cn/10K	±0.0300
Hysteresis error (dhy) 滞后误差	% of Cn	±0.3000
Non-linearity(dlin) 非线性误差	% of Cn	±0.2520
Creep(dcr) over 30 min. 蠕变及蠕变恢复	% of Cn	±0.050
Input (RLc) & Output resistance (Ro) 输入&输出电阻	Ω	750 ± 10 & 703 ± 2
Nominal range of excitation voltage (Bu) 额定电压	V	5~12
Insulation resistance (Ris) at 50Vdc 绝缘电阻	MΩ	≥5000
Service temperature range (Btu) 工作温度	℃	-30...+70
Safe load limit (EL) & Breaking load (Ed) 安全承载&破坏载荷	% of Emax	150 & 300
Protection class according to EN 60 529 (IEC 529) 保护等级		IP68
Material :Measuring element 材料: 弹性体 Cable fitting 电缆配件/Cable-sheath 电缆护套		Alloy steel Nickel-plated brass/PVC

Maximum capacity (Emax) 额定载荷	t	1.5	2.5	4	5	7.5	10
Deflection at Emax (snom) ,approx最大载荷下的变形量	mm	0.35			0.39		
Weight(G),approx 重量	kg	9.2			15.8		
Cable 电缆: Diameter 直径: ∅6mm Length长度	m	5			5		