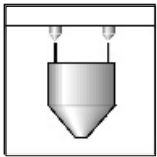
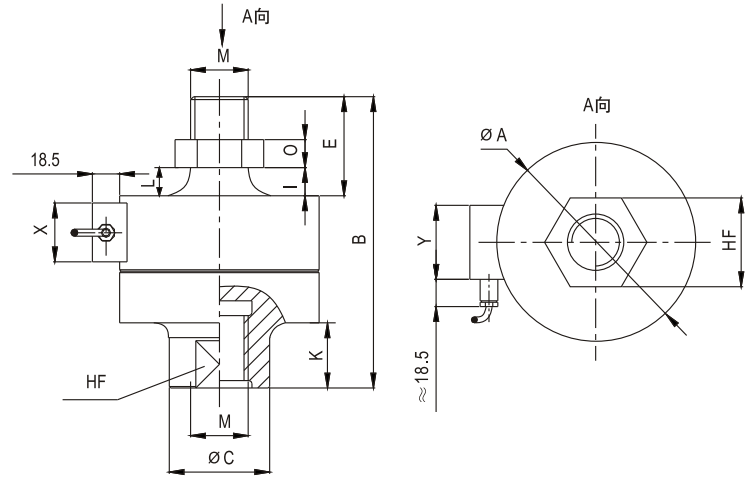


# DSK02

## Load cells 称重传感器



Emax[t]	A	B	C	E	K	L	M	O	HF	X	Y
0.5, 1	50	72	21	24	22	5	M12	6	19	20	35
2	90	112	33	38	25	10.6	M20×1.5	10	30	30	50
5	100	141	40	47	25	13.2	M24×2	12	36	30	50
10	135	197	68	67	26	19	M39×2	19	60	30	50
20	155	232	82	85	26.5	24.2	M48×2	22	70	30	50

### Specifications 技术说明 Exc+激励正 (Red,红);Exc-激励负(Black,黑);Sig+信号正(Green,绿);Sig-信号负(White,白)

Item 项目	Unit 单位	Parameter 参数	
Accuracy class to OIML R 60 精度等级		0.1	D1
<b>Maximum capacity (Emax) 额定载荷</b>	<b>t</b>	<b>0.5,1,2,5,10,20</b>	
Minimum LC verification interval (Vmin)最小检定分度值	% of Emax	-	0.0286
<b>Sensitivity (Cn) / Zero balance 灵敏度/零点平衡</b>	<b>mV/V</b>	<b>2.0 ± 0.01 / 0 ± 0.02</b>	
Temperature effect on zero balance (TK0) 温度对零点影响	% of Cn/10K	±0.05	
Temperature effect on sensitivity (TKc) 温度对灵敏度影响	% of Cn/10K	±0.05	
Hysteresis error (dhy) 滞后误差	% of Cn	±0.1500	±0.0500
Non-linearity(dlin) 非线性误差	% of Cn	±0.1000	±0.0500
Creep(dcr) over 30 min. 蠕变及蠕变恢复	% of Cn	±0.0600	±0.0500
<b>Input (RLc) &amp; Output resistance (R0) 输入&amp;输出电阻</b>	<b>Ω</b>	<b>750 ± 10 &amp; 703 ± 2</b>	
<b>Nominal range of excitation voltage (Bu) 额定电压</b>	<b>V</b>	<b>5~12</b>	
Insulation resistance (Ris) at50Vdc 绝缘电阻	MΩ	≥5000	
Service temperature range (Btu) 工作温度	℃	-30...+70	
Safe load limit (EL) & Breaking load(Ed) 安全承载&破坏载荷	% of Emax	150 & 300	
<b>Protection class according to EN 60 529 (IEC 529) 保护等级</b>		<b>IP68( test conditions 100h at 1 m Water column)</b>	
Material :Measuring element 材料: 弹性体 Cable fitting 电缆配件/Cable-sheath 电缆护套		Stainless or alloy steel Stainless steel / PVC	

Maximum capacity (Emax) 额定载荷	t	0.5	1	2	5	10	20
Deflection at Emax (snom) ,approx最大载荷下的变形量	mm	<0.1	<0.07	<0.09			
Weight(G),approx 重量	kg	0.8	2.9	4.3	10.7	15.9	
Cable 电缆: Diameter 直径: ∅6mm Length长度	m	3	6	12			