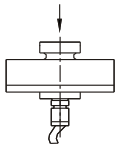
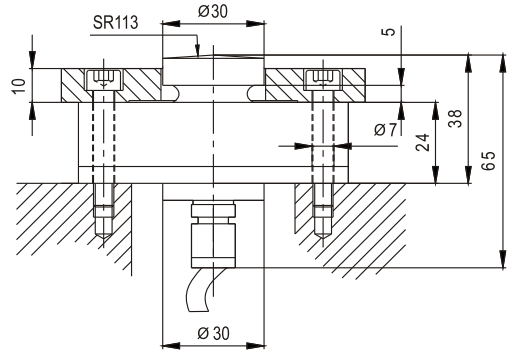
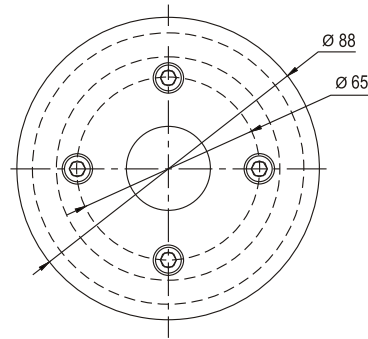


# DSK05

## Load cells 称重传感器



Axle wheel identify unit  
轮轴识别器



### Specifications 技术说明    Exc+激励正 (Red,红);Exc-激励负(Black,黑);Sig+信号正(Green,绿);Sig-信号负(White,白)

Item 项目	Unit 单位	Parameter 参数
Accuracy class to OIML R 60 精度等级	% of Cn	0.5
<b>Maximum capacity (Emax) 额定载荷</b>	<b>t</b>	<b>3</b>
Minimum LC verification interval (Vmin) 最小检定分度值	% of Emax	0.1
<b>Sensitivity (Cn) / Zero balance 灵敏度/零点平衡</b>	<b>mV/V</b>	<b>1.2 ± 0.1 / +0.024~+0.0480</b>
Temperature effect on zero balance (TK0) 温度对零点影响	% of Cn/10K	±0.02
Temperature effect on sensitivity (TKc) 温度对灵敏度影响	% of Cn/10K	±0.02
Hysteresis error (d <sub>hy</sub> ) 滞后误差	% of Cn	±0.5000
Non-linearity(d <sub>lin</sub> ) 非线性误差	% of Cn	±0.5000
Creep(d <sub>cr</sub> ) over 30 min. 蠕变及蠕变恢复	% of Cn	±0.2000
<b>Input (RLc) &amp; Output resistance (R0) 输入&amp;输出电阻</b>	<b>Ω</b>	<b>730 ± 30 &amp; 702 ± 3</b>
<b>Nominal range of excitation voltage (Bu) 额定电压</b>	<b>V</b>	<b>5~12</b>
Insulation resistance (Ris) at 50Vdc 绝缘电阻	MΩ	≥5000
Service temperature range (Btu) 工作温度	℃	-30...+70
Safe load limit (EL) & Breaking load(Ed) 安全承载&破坏载荷	% of Emax	150 & 180
<b>Protection class according to EN 60 529 (IEC 529) 保护等级</b>		<b>IP67</b>
Material :Measuring element 材料: 弹性体 Cable fitting 电缆配件/Cable-sheath 电缆护套		Stainless or alloy steel Stainless steel /PVC
Deflection at Emax (snom) ,approx 最大载荷下的变形量	mm	<0.07
Weight(G),approx 重量	kg	1.5
Cable 电缆: Diameter 直径: Ø5mm Length长度	m	7