

PC01

Self-restoring rockerpin load cell 自复位柱式传感器



Special features 特点

- Self-restoring function
- Nominal loads: 10t~50t
- Simple to install
- Laser welded, IP68
- Legal for trade verification
- Optimized for parallel connection by corner pre-adjustment
- Meets EMC/ESD requirements according to EN 45 501
- 自复位功能
- 额定称重范围: 10t ~ 50t
- 激光焊接IP68
- 贸易许可认证
- 经过角差预调整适合并联使用(按EN 45 501)

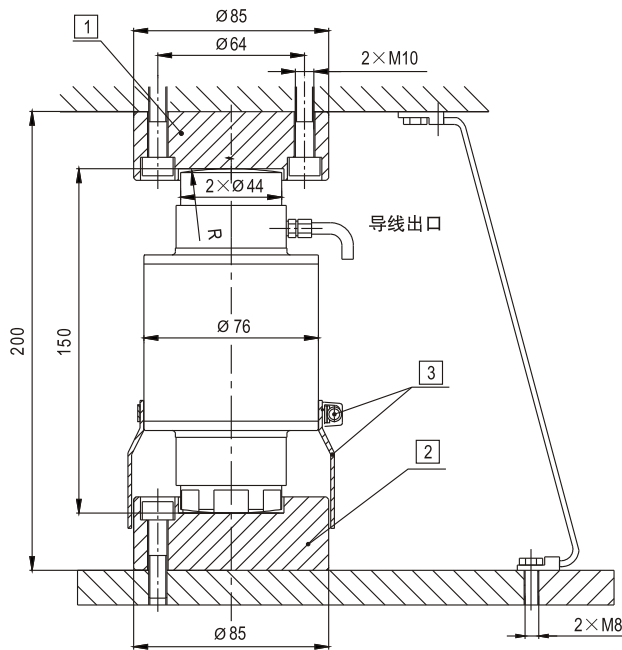
汽车衡、轨道衡、轴量秤、地上衡
Truck scale, railway scale, axle wheel scale, floor scale

Specifications 技术说明 Exc+激励正 (Red, 红); Exc-激励负 (Black, 黑); Sig+信号正 (Green, 绿); Sig-信号负 (White, 白)

Item 项目	Unit 单位	Parameter 参数	
		C 2	C 3
Accuracy class to OIML R 60 精度等级		C 2	C 3
Maximum capacity (E_{max}) 额定载荷	t	10, 15, 20, 30, 40, 50	
Minimum LC verification interval (V _{min}) 最小检定分度值	% of E _{max}	0.0200	0.0100
Sensitivity (C_n) / Zero balance 灵敏度/零点平衡	mV/V	2.0 ± 0.002 / 0 ± 0.02	
Temperature effect on zero balance (TK ₀) 温度对零点影响	% of C _n /10K	±0.02	±0.0170
Temperature effect on sensitivity (TK _c) 温度对灵敏度影响	% of C _n /10K	±0.02	±0.0170
Hysteresis error (d _{hy}) 滞后误差	% of C _n	±0.0270	±0.0180
Non-linearity (d _{lin}) 非线性误差	% of C _n	±0.0250	±0.0167
Creep (d _{cr}) over 30 min. 蠕变及蠕变恢复	% of C _n	±0.030	±0.0167
Input (R_{Lc}) & Output resistance (R_o) 输入&输出电阻	Ω	700 ± 20 & 703 ± 3.5	
Nominal range of excitation voltage (B_u) 额定电压	V	5~12	
Insulation resistance (R _{is}) at 50Vdc 绝缘电阻	MΩ	> 5000	
Service temperature range (B _{tu}) 工作温度	°C	-30...+70	
Safe load limit (E _L) & Breaking load (E _d) 安全承载&破坏载荷	% of E _{max}	150 & 250	
Protection class according to EN 60 529 (IEC 529) 保护等级		IP68	
Material : Measuring body+housing 材料: 弹性体 + 壳体		Stainless or alloy steel + Stainless steel	

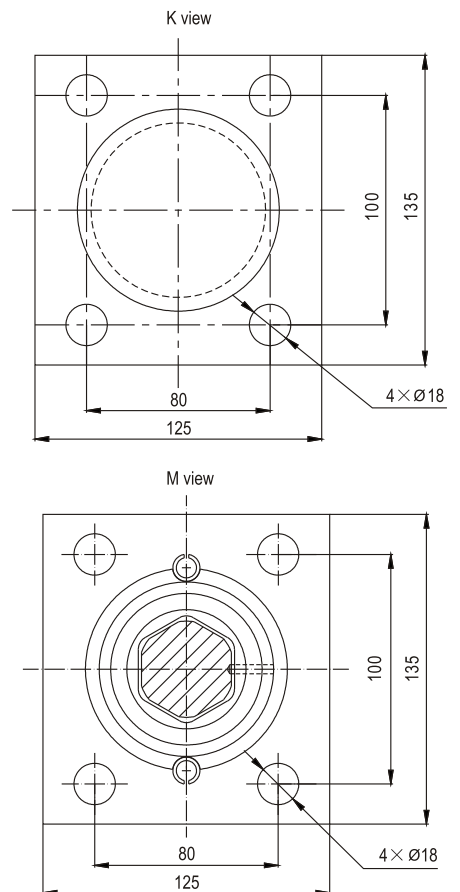
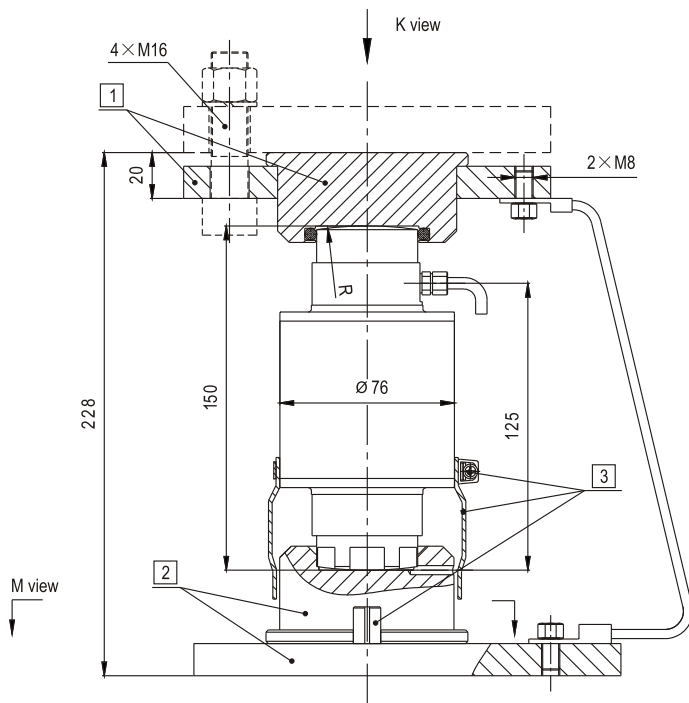
Maximum capacity (E _{max}) 额定载荷	t	10	15	20	30	40	50
Min. scale verification (e _{min}) according to En45501 [...#]=max. Number of load cells 秤的最小检定分度值	kg	5 [6#]	5 [6#]	5 [6#] 10 [8#]	10 [8#]	10 [6#] 20 [8#]	10 [4#] 20 [10#]
Recommended maximum weighing capacity of scale 推荐秤的额定载荷	t	20	30	50 80	100	120 150	100 200
Deflection at E _{max} (s _{non}), approx 最大载荷下的变形量	mm	0.55	0.55	0.65	0.75	0.85	0.85
Weight (G), approx 重量	kg	2.8	3.2	3.2	3.6	3.6	3.8
Cable 电缆: Diameter 直径: ∅6mm Length 长度	m	10	12	12	14	16	16

Mounting variation 1: 安装方式1:
(not for PC01-50t 不适应PC01-50t)



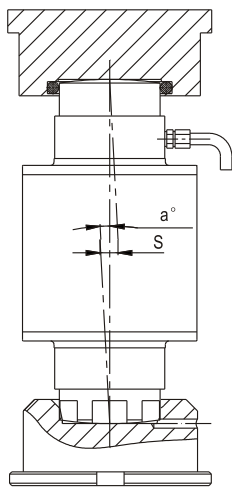
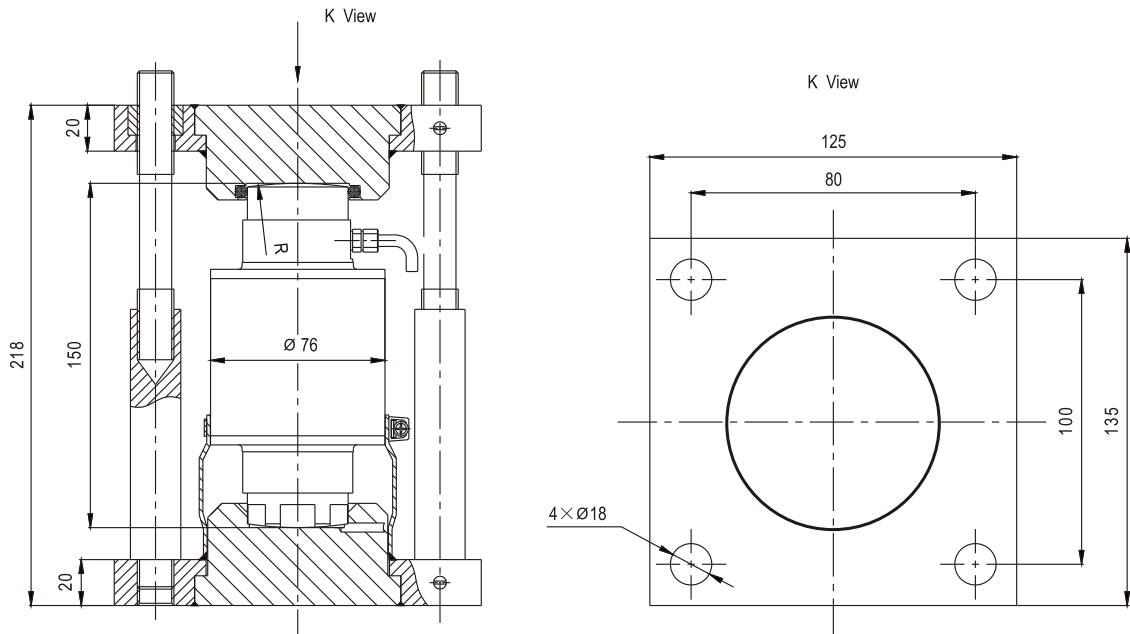
- 1 PC01/ZOU B1
- 2 PC01/ZOU2 B2
- 3 Flexible tube and tube clip enclosed in the packing of the load cell
伸缩管与管夹在传感器包装中。

Mounting variation 2: 安装方式2:
(not for PC01-10t 不适应PC01-10t)

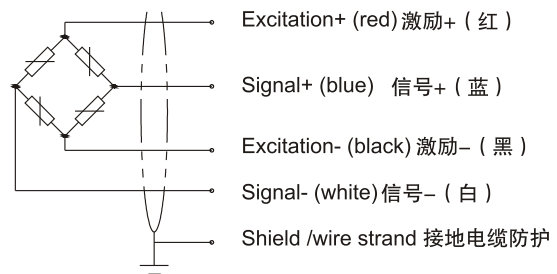


- 1 PC01/ZOU A1
- 2 PC01/ZOU A2
- 3 Dowel pin(rotation stop),flexible tube and tube clip enclosed in the packing of the load cell
防转插销,伸缩管与管夹在传感器包装中。

Mounting variation 3: 安装方式3:



Wiring code (4-wire circuit)
 电缆芯线色标 (四线制)



Mounting variation 1 to 3 : 安装方式1到3:

Maximum capacity (E _{max}) 额定载荷	t	10	15	20	25	30	40	50
R ball 球头半径	mm	130		160		180		220
a _{max} 最大允许倾斜角度	" ° " 度	5		5		5		4.5
S _{max} 最大允许侧向偏移	mm	12		12		12		10.5
FR(%of applied load)	at S max	6.3		9.8		12		12
回复力 (施力大小的百分比)	at S=1mm	0.48		0.75		0.93		0.93