

PC03

Self-restoring rockerpin load cell 自复位柱式传感器



汽车衡、轨道衡、轴量秤、罐装衡

Truck scale, railway scale, axle wheel scale, canned scale

Special features 特点

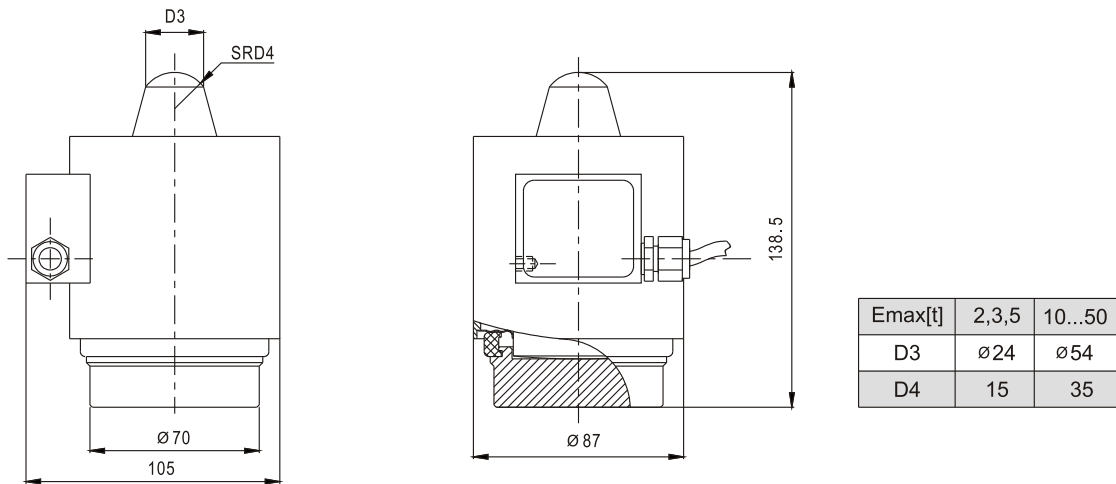
- Self-restoring function
- Nominal loads: 2t~50t
- Simple to install
- Laser welded, IP68
- Optimized for parallel connection by corner pre-adjustment
- Meets EMC/ESD requirements according to EN 45 501
- 自复位功能
- 额定称重范围: 2t ~ 50t
- 安装简便
- 激光焊接, IP68
- 经过角差预调整适合并联使用 (按 EN 45 501)

Specifications 技术说明 Exc+激励正 (Red,红);Exc-激励负(Black,黑);Sig+信号正(Green,绿);Sig-信号负(White,白)

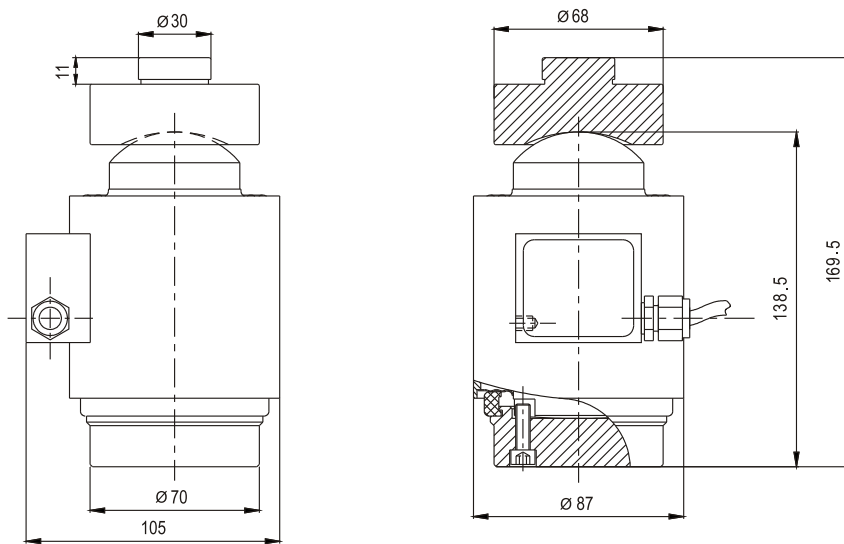
Item 项目	Unit 单位	Parameter 参数	
Accuracy class to OIML R 60 精度等级		C 1	C 3
Maximum capacity (E_{max}) 额定载荷	t	2,3,5,10,15,20,25,30,40,50	
Minimum LC verification interval (V _{min}) 最小检定分度值	% of E _{max}	0.0200	0.0100
Sensitivity (C_n) / Zero balance 灵敏度/零点平衡	mV/V	1.0 ± 0.002 / 0 ± 0.02	
Temperature effect on zero balance (TK ₀) 温度对零点影响	% of C _n /10K	±0.02	±0.0170
Temperature effect on sensitivity (TK _c) 温度对灵敏度影响	% of C _n /10K	±0.02	±0.0170
Hysteresis error (d _{hy}) 滞后误差	% of C _n	±0.0500	±0.0180
Non-linearity(d _{lin}) 非线性误差	% of C _n	±0.0500	±0.0167
Creep(d _{cr}) over 30 min. 蠕变及蠕变恢复	% of C _n	±0.030	±0.0167
Input (R_{ic}) & Output resistance (R_o) 输入&输出电阻	Ω	650 ± 10 & 610 ± 2	
Nominal range of excitation voltage (B_u) 额定电压	V	5~12	
Insulation resistance (R _{is}) at 50Vdc 绝缘电阻	MΩ	≥5000	
Service temperature range (B _{tu}) 工作温度	°C	-30...+70	
Safe load limit (E _L) & Breaking load(E _d) 安全承载&破坏载荷	% of E _{max}	150 & 300	
Protection class according to EN 60 529 (IEC 529) 保护等级		IP68	
Material :Measuring body+housing 材料: 弹性体 + 壳体		Stainless or alloy steel + Stainless steel	

Maximum capacity (E _{max}) 额定载荷	t	2~3	5	10	15	20	30	40	50
Min. scale verification (e _{min}) according to En45501 [...#]=max. Number of load cells 秤的最小检定分度值	kg	1 [4#]	2 [4#]	5 [6#]	5 [6#]	5 [6#] 10 [8#]	10 [8#]	10 [6#] 20 [8#]	10 [4#] 20 [10#]
Deflection at E _{max} (s _{non}), approx 最大载荷下的变形量	mm	<0.45							
Weight(G), approx 重量	kg	1.6		1.9		2.1	2.1	2.3	
Cable 电缆: Diameter 直径: ∅6mm Length 长度	m	8		12		12	14	14	

Mounting variation 1: 安装方式1:



Mounting variation 2: 安装方式2:



Mounting variation 3: 安装方式3:

