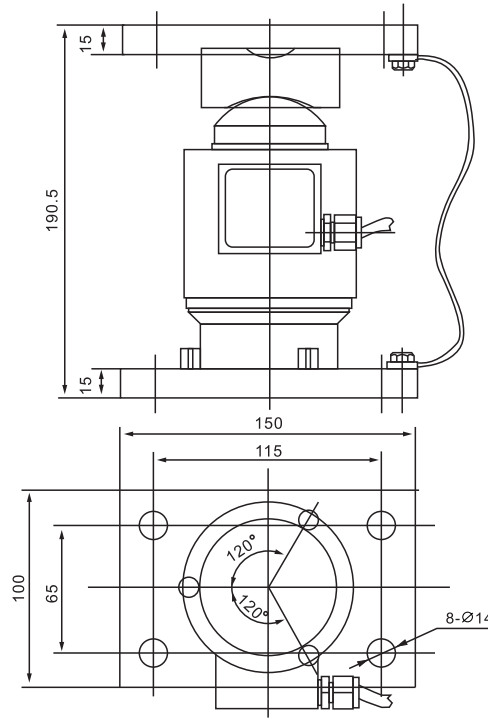
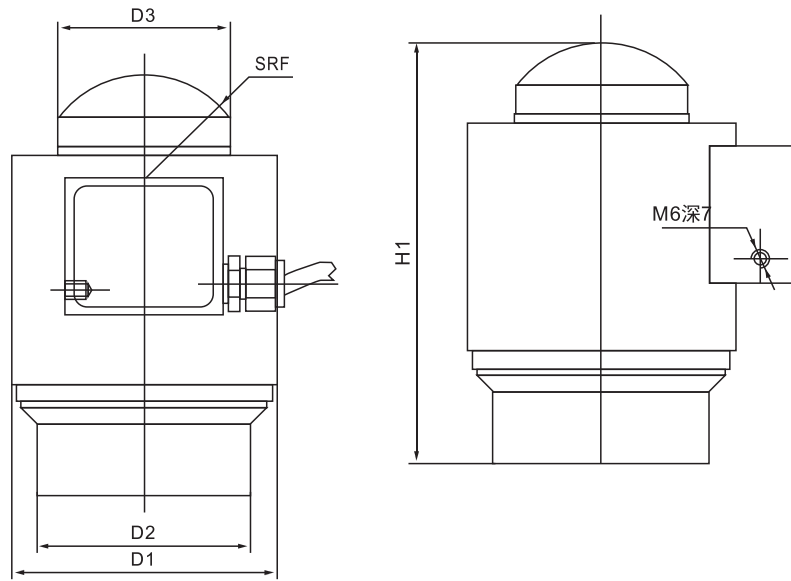


PC07

称重传感器 Load cells



额定载荷(t) Rated Load	2-5	10-50
D1	φ87	φ87
D2	φ70	φ70
D3	φ24	φ54
H1	138.5	138.5
F	35	35

汽车衡、轨道衡、轴量秤、罐装秤
Truck scale, railway scale, axle wheel scale, canned scale

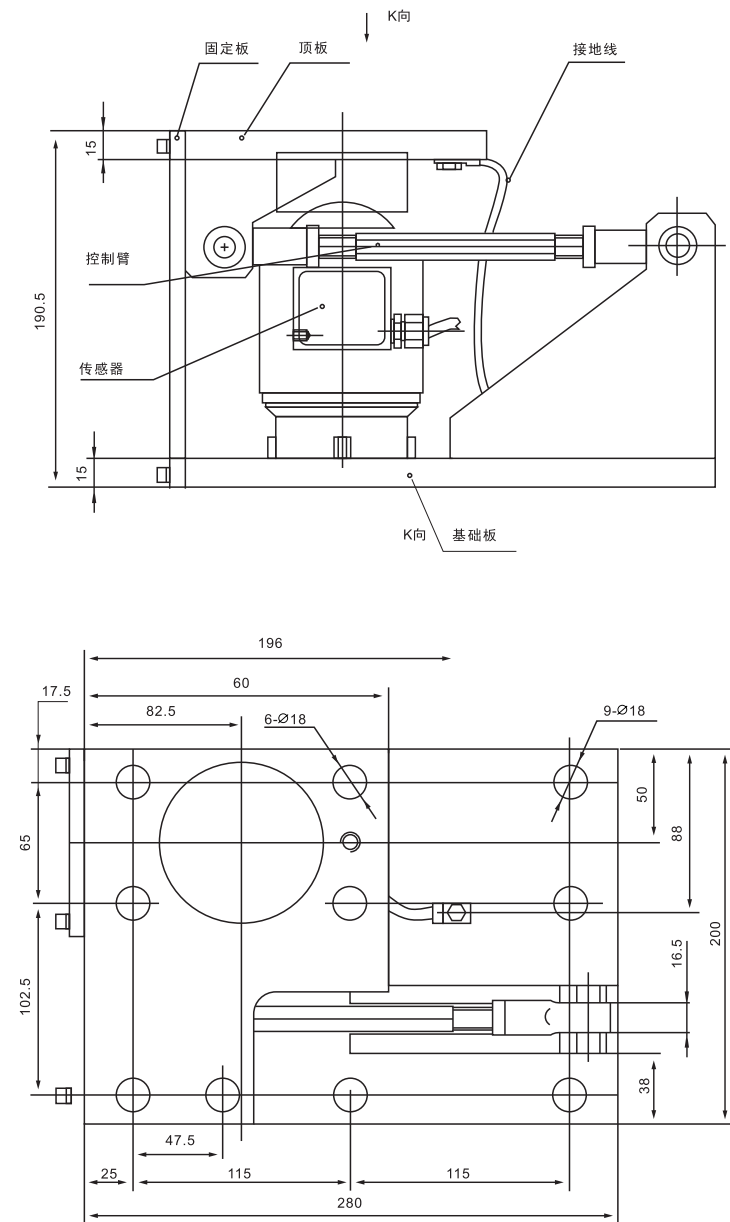
Specifications 技术说明

Exc+激励正 (Red,红);Exc-激励负(Black,黑);Sig+信号正(Green,绿);Sig-信号负(White,白)

额定载荷 Rated Load	2,3,5,15,20,25,30,40,50t	工作温度范围 Operating Temp Range	-30~+70℃
灵敏度 Sensitivity	1.0±0.002mV/V	安全过载 Safe load limit	150%F.S
综合误差 Total error	±0.05%F.S	极限过载 Over load limit	250%F.S
蠕变 (30分钟) Creep(30min)	±0.02%F.S	推荐激励电压 Recommend excitation	10~12V DC
零点平衡 Zero balance	±1%F.S	最大激励电压 Maximum excitation	15V DC
零点温度影响 TCO	±0.03%F.S/10℃	密封等级 Protection Class	IP68
输出温度影响 TC SPAN	±0.03%F.S/10℃	材质 Construction	-A:合金钢Alloy Steel,-SS:不锈钢Stainless Steel
输入阻抗 Input resistance	650±10Ω	电缆 Cable	
输出阻抗 Output resistance	610±3Ω		Length:14m
绝缘电阻 Insulation resistance	≥5000MΩ		Diameter: φ6mm

PC07

PC07 称重模块



模块安装方式

