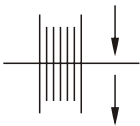
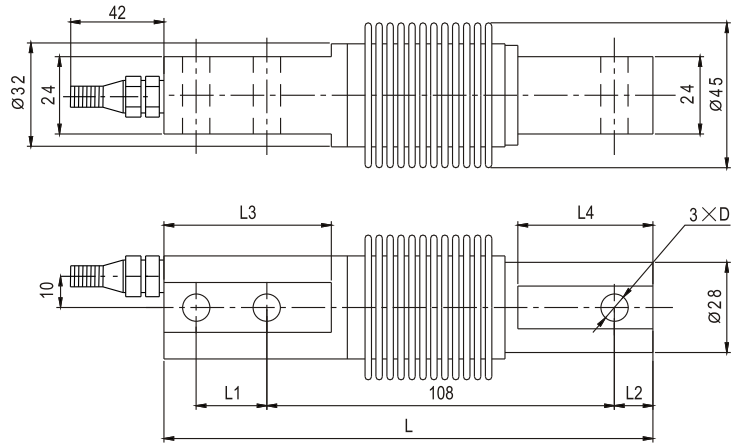


BL03

Load cells 称重传感器



料斗秤、皮带秤、配料系统
Oppor scale, belt scale, blending system

E _{max} [kg]	L	L1	L2	L3	L4	D
25,50	152	22	12	52	42	$\varnothing 8.5$
100,200	168	28	19	62	48	$\varnothing 11$

Specifications 技术说明 Exc+激励正 (Red,红);Exc-激励负(Black,黑);Sig+信号正(Green,绿);Sig-信号负(White,白)

Item 项目	Unit 单位	Parameter 参数	
Accuracy class to OIML R 60 精度等级		C2	C3
Maximum capacity (E_{max}) 额定载荷	kg	20,50,100,200	
Minimum LC verification interval (V _{min}) 最小检定分度值	% of E _{max}	0.0200	0.0100
Sensitivity (C_n) / Zero balance 灵敏度/零点平衡	mV/V	2.0 ± 0.002 / 0 ± 0.02	
Temperature effect on zero balance (TK ₀) 温度对零点影响	% of C _n /10K	±0.02	±0.0170
Temperature effect on sensitivity (TK _c) 温度对灵敏度影响	% of C _n /10K	±0.02	±0.0170
Hysteresis error (d _{hy}) 滞后误差	% of C _n	±0.0270	±0.0180
Non-linearity (d _{lin}) 非线性误差	% of C _n	±0.0250	±0.0167
Creep (d _c) over 30 min. 蠕变及蠕变恢复	% of C _n	±0.0233	±0.0167
Input (R_{Lc}) & Output resistance (R_o) 输入&输出电阻	Ω	400 ± 10 & 352 ± 3	
Nominal range of excitation voltage (B_u) 额定电压	V	5~12	
Insulation resistance (R _{is}) at 50Vdc 绝缘电阻	MΩ	≥5000	
Service temperature range (B _{tu}) 工作温度	°C	-30...+70	
Safe load limit (E_L) & Breaking load (E_d) 安全承载&破坏载荷	% of E _{max}	150 & 200	
Protection class according to EN 60 529 (IEC 529) 保护等级		IP68	
Material :Measuring element 材料: 弹性体 Cable fitting 电缆配件 Cable-sheath 电缆护套		Stainless or alloy steel Stainless steel or nickel-plated brass PVC	

Maximum capacity (E _{max}) 额定载荷	kg	20	50	75	100	150	200
Deflection at E _{max} (s _{nom}) ,approx最大载荷下的变形量	mm	0.31			0.39		
Weight(G),approx 重量	kg	0.6			0.8		
Cable length 电缆长度 Diameter 直径: $\varnothing 5$ mm	m	3			3		