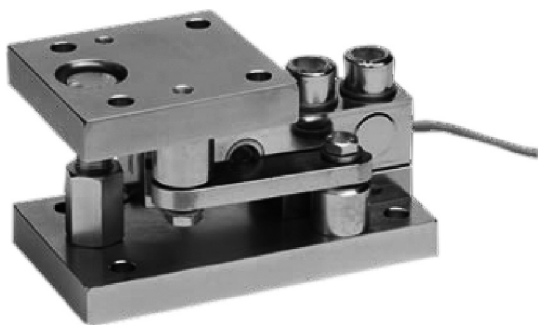


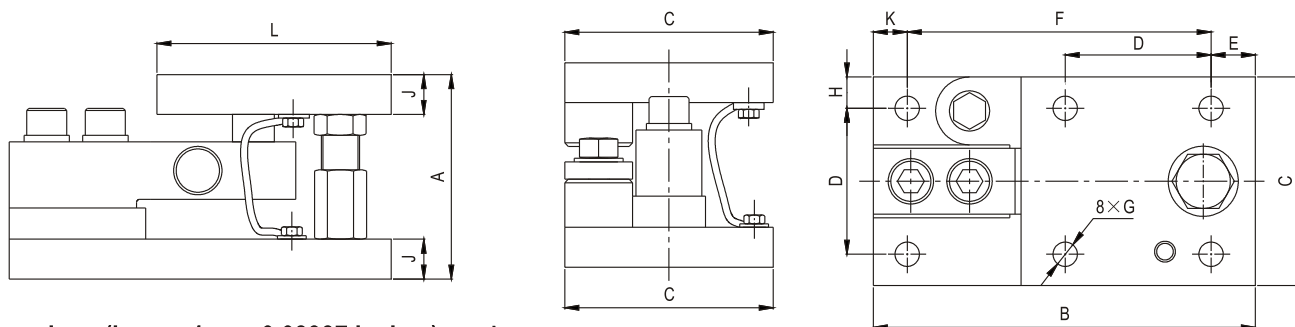
SSB02/M01

Weighing module for 500kg...5t 用于500kg到5t的称重模块



Special features 特点

- Equipped with load cell SSB02, class C2,C3 according to OIML R60
- Compact installation at minimum installation height
- Easy installation
- With anti-liftoff device and lifting device
- 用于精度等级为C2, C3的SSB02传感器
- 结构紧凑
- 安装简单
- 带有升力与反升力装置



Dimensions (in mm; 1mm=0.03937 inches) 尺寸

E _{max} [t]	A	B	C	D	E	F	∅G	H	J	K	L
0.5,1,2,2.5	93.6±1.6	170	100	70	17	136	13.5	15	19	17	104
3,5	125.3±2	220	120	84	25.5	175	14	18	23	19.5	135

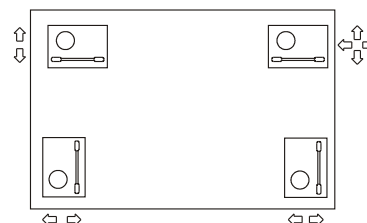
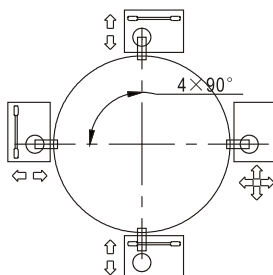
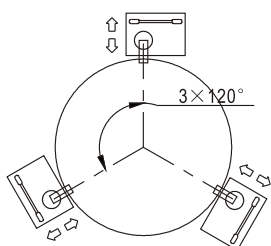
Specifications 技术说明 Exc+激励正 (Red,红);Exc-激励负(Black,黑);Sig+信号正(Green,绿);Sig-信号负(White,白)

Maximum capacity 额定载荷	t	0.5	1	2	2.5	3	5
Limit load 安全载荷	% of E _{max}	150%					
Total error of load cells 传感器综合性能	% of E _{max}	±0.02, ±0.03, ±0.05					
Material 材料:		Galvanized or stainless steel 电镀材料或不锈钢					
Cable 电缆: Diameter 直径 Length 长度	mm	∅6					
	m	3			4.2		

Mounting examples for weighing modules 安装方式

Cylindrical arrangement of the weighing module below tanks
称重模块在罐下部的的圆形布置

Rectangular arrangement of the weighing module below tanks
称重模块在罐下部的的方形布置



Remark备注: Stay rod 支撑杆 Load introduction 负载方向 Degree of freedom 自由度