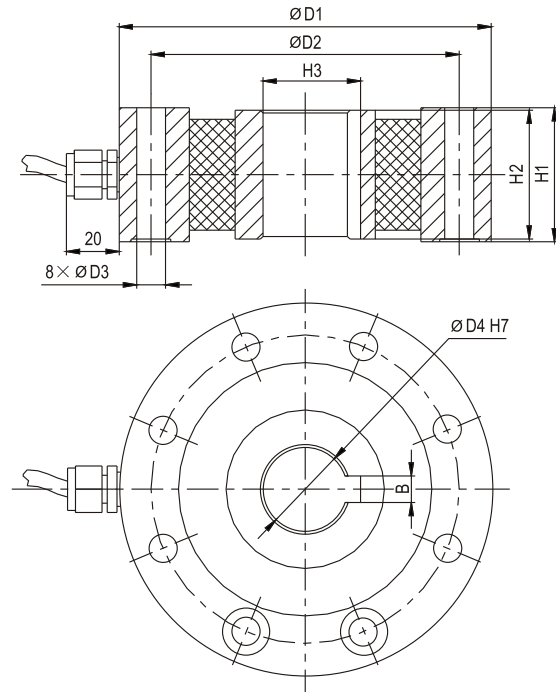
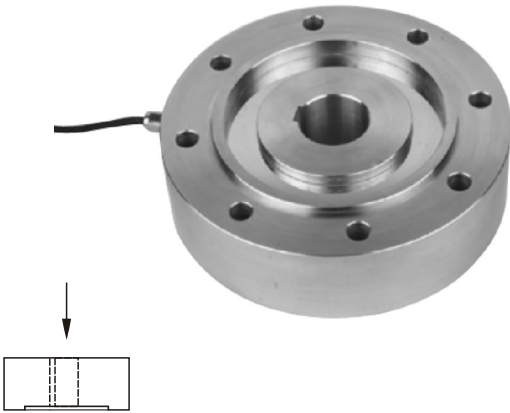


SPK05

Load cells 称重传感器

Highsor

轮辐式 Spoke Type Load Cells



配料秤、包装秤、动态检测系统、台秤
Hopper scale, packing scale, dynamic testing system, platform scale

Emax[t]	D1	D2	D3	D4	H1	H2	H3	B
1,2,3	112	96	9	18	45	43	20.8	6
5,10	150	125	11	28	45	43	31.8	8
60	226	190	14	45	66	62	48	14

Specifications 技术说明 Exc+激励正 (Red,红);Exc-激励负(Black,黑);Sig+信号正(Green,绿);Sig-信号负(White,白)

Item 项目	Unit 单位	Parameter 参数
Accuracy class to OIML R 60 精度等级		D1
Maximum capacity (Emax) 额定载荷	t	1,2,3,5,10,60
Minimum LC verification interval (Vmin)最小检定分度值	% of Emax	0.0200
Sensitivity (Cn) / Zero balance灵敏度/零点平衡	mV/V	2.0 ± 0.005 / 0 ± 0.02
Temperature effect on zero balance (TK0) 温度对零点影响	% of Cn/10K	±0.0500
Temperature effect on sensitivity (TKc) 温度对灵敏度影响	% of Cn/10K	±0.0500
Hysteresis error (dhy) 滞后误差	% of Cn	±0.1000
Non-linearity(dlin) 非线性误差	% of Cn	±0.1000
Creep(dcr) over 30 min. 蠕变及蠕变恢复	% of Cn	±0.0500
Input (RLc) & Output resistance (Ro) 输入&输出电阻	Ω	750 ± 10 & 703 ± 2
Nominal range of excitation voltage (Bu) 额定电压	V	5~12
Insulation resistance (Ris) at 50Vdc 绝缘电阻	MΩ	>5000
Service temperature range (Btu) 工作温度	℃	-30...+70
Safe load limit (EL) & Breaking load(Ed) 安全承载&破坏载荷	% of Emax	150 & 200
Protection class according to EN 60 529 (IEC 529) 保护等级		IP67
Material :Measuring element 材料: 弹性体 Cable fitting 电缆配件/Cable-sheath 电缆护套		Alloy steel Stainless steel /PVC

Maximum capacity (Emax) 额定载荷	t	1	2	3	5	10	60
Deflection at Emax (snom) ,approx 最大载荷下的变形量	mm	0.65			0.75		0.75
Weight(G),approx 重量	kg	2.3			4.3		14.5
Cable 电缆: Diameter 直径: Ø6mm Length长度	m	5			8		12